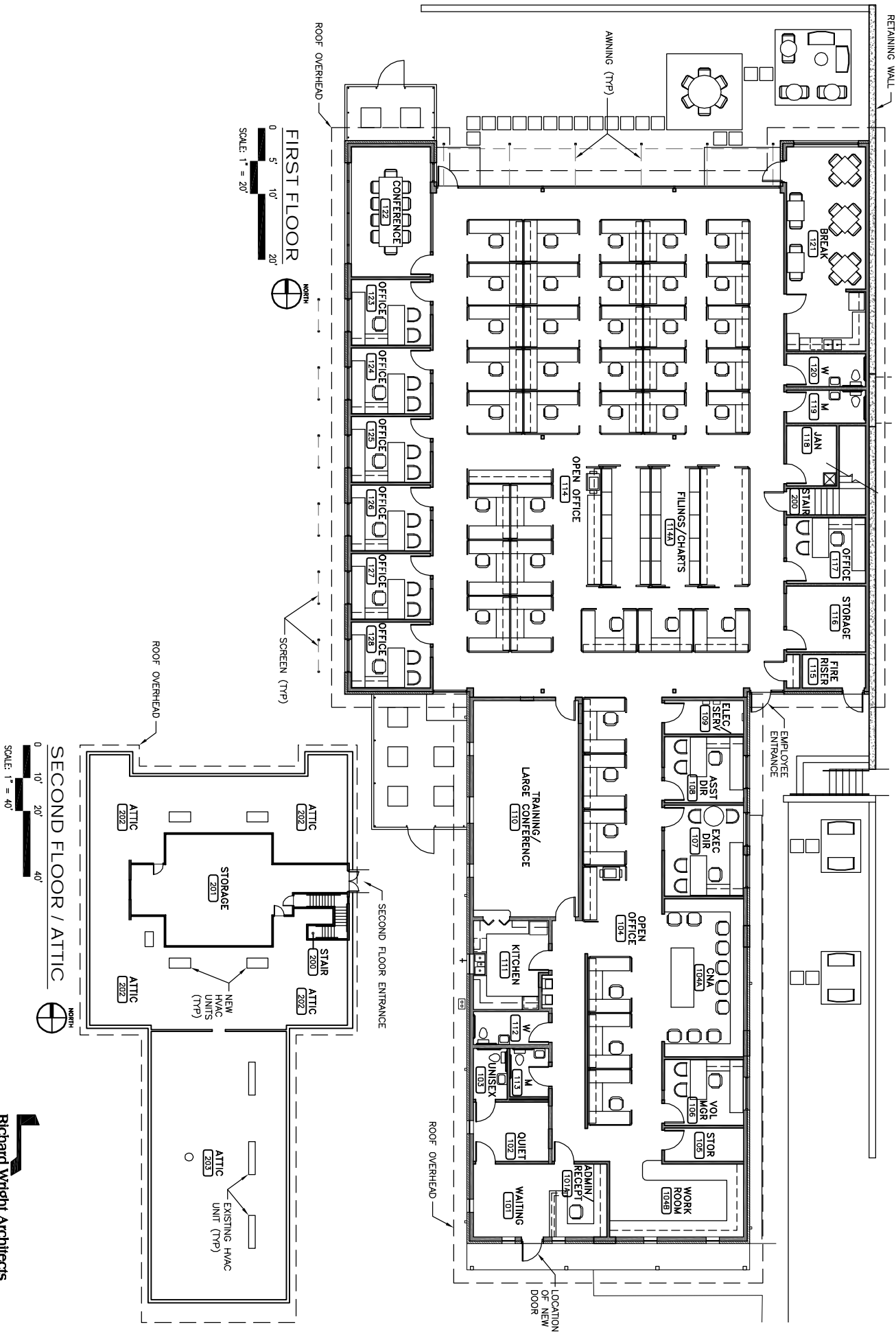


Home Hospice of Grayson County Renovation & Addition

Floor Plans

First Floor Area: 9,989 s.f. (Outside Face)
 Second Floor Area: 1,516 s.f.
 Total Floor Area: 11,505 s.f.



Richard Wright Architects

3200 Main St., Suite 6.3
 Dallas, Texas 75226-1569
 Phone: 214-747-4240
 Fax: 214-939-5233
www.rwrightarchitects.com